

Keeping You **CONNECTED**

JAN/FEB 2024

CEO Message, pg. 5

Photo Contest, pg. 6

Teacher Appreciation Program, pg. 8



CONTENTS



OUR COVER

Crystal Stepper captured first place in Triangle's 2023 Photo Contest with colorful scene taken on her property south of Chinook.

Holiday Closures

New Year's Day
(January 1, 2024)

Please call
1-800-332-1201
24/7 to report any phone
or Internet issues.



FEATURES

- | | |
|--|--|
| 2 Community Crossword
Featuring Turner/Hogeland | 6 2023 Photo Contest Winners |
| 3 Cook's Connection
Dishing up our Readers' Best Recipes | 7 Scholarship & Grant Opportunities |
| 4 Community Feature | 8 Teacher Appreciation |
| 5 CEO Message | 9 Swap & Shop |
| | 10 Tips for Making Your Payment |

CONTACT US

Call 406.394.7807 or 611 or 1.800.332.1201

Pay by Phone 1.888.815.1040

E-mail www.itstriangle.com/contact-us

Visit Mon - Fri 8am - 5pm, 2121 Hwy 2 NW

Write PO Box 1220, Havre MT 59501

24/7 Internet Tech Support 1.877.730.8215

Call Before You Dig 811 or CallBeforeYouDig.com

Website www.itstriangle.com

[f](https://www.facebook.com/trianglecommunications)/trianglecommunications

[@ItsTriangle](https://twitter.com/ItsTriangle)

[You Tube](https://www.youtube.com/ItsTriangle) @ItsTriangle

[in](https://www.linkedin.com/company/triangle-communications) triangle-communications

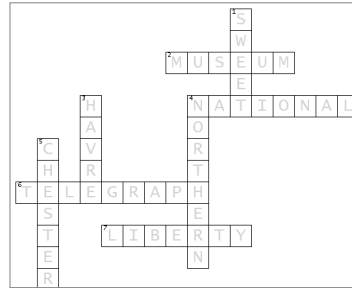
TURNER/HOGELAND CROSSWORD

ACROSS

- The Great _____ Railway missed Turner when the new line came through in 1928, the residents of Turner moved their buildings and belongings 2 miles to the present location.
- Both communities are located in _____ County.
- By the late 1970s the _____ of Hogeland was only 35 residents.
- The Great Northern Railway came through the "Big Flat" in 1928 with its new line between _____ and Hogeland.

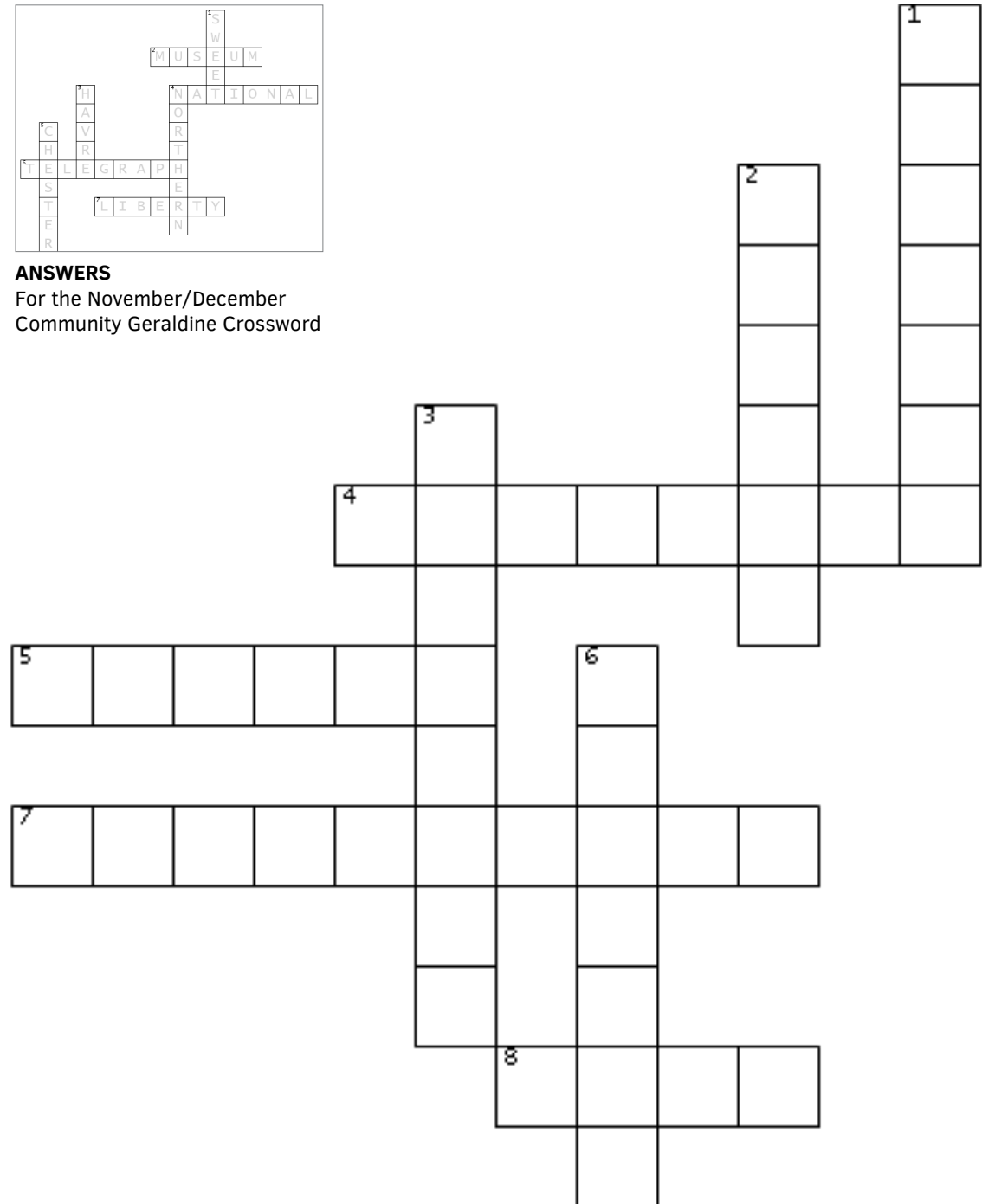
DOWN

- Hogeland began as a _____ stop on the railway about 1928.
- In 1912, Henry _____ built a store on the east bank of Buckley Coulee and a post office later that year.
- This town was named for A. H. _____ the Great Northern Railway's chief engineer.
- Hogeland began as a station stop on the _____ about 1928.



ANSWERS

For the November/December
Community Geraldine Crossword



COOK'S CONNECTION

DISHING UP MONTANA'S BEST RECIPES

Thank you to everyone who has shared their recipes, keep them coming! If you have a favorite recipe of any kind that you would like to share, we would love to have it.



RECIPE

No Peek Stew (Pictured)

From HCE/Triangle Cooking for a Cure Cookbook

INGREDIENTS

2 lbs. stew meat or a 2-5 lb. roast
1 c. celery, chopped
4 carrots, sliced
1 medium onion, cut into bite size pieces
5 potatoes, cut into 1-inch pieces
3 Tbsp. instant tapioca
1 Tbsp. sugar
1 (12-14 oz.) can V8 or tomato juice
1 ½ cups water
¼ c. Worcestershire sauce
Salt, pepper, Johnny's or Lawry's season salt to taste

DIRECTIONS

Place meat and vegetables in a crockpot. Mix remaining ingredients together and pour over the top. Cook on low for 8-9 hours or high for 4-5 hours. Can also cook in oven at 250° for 5 hours.

RECIPE

Pan Fried Brussels Sprouts

From HCE/Triangle Cooking for a Cure Cookbook

INGREDIENTS

1-2 Tbsp. olive oil
2 tsp. minced garlic
¼ c. onion, chopped
1 lb. fresh Brussels sprouts
Salt and pepper to taste
Garlic powder to taste

DIRECTIONS

Wash, trim and halve Brussels sprouts. Heat oil in a large skillet. Add garlic and onion; cook until soft. Add Brussels sprouts and cook over medium high heat. Do not turn until underside is golden brown. Cook until all sides are golden brown and sprouts have softened. Season with salt, pepper, and garlic powder.

RECIPE

Waffle Iron Cookies

From HCE/Triangle Cooking for a Cure Cookbook

INGREDIENTS

½ cup brown sugar
½ cup white sugar
½ cup margarine or butter
½ cup cream or milk
2 eggs
¾ cup cake flour
¾ cup plus 2 Tbsp. all-purpose flour
1 ½ squares unsweetened chocolate, melted

DIRECTIONS

Mix ingredients in order shown. Bake approximately 1 in waffle iron, preheated on medium. Top with chocolate icing.

BIG SANDY

Experience the charm of The Mint, your welcoming local spot in Big Sandy. Indulge in the café delights from Monday to Saturday, 11 AM to 9 PM, and on Sunday, savor their offerings from 11 AM to 8 PM. Weekdays come alive with lunch specials, while Saturdays are adorned with mouthwatering Prime Rib. Venture into the back room, where an intriguing collection of animal mounts awaits, alongside gaming machines and a pool table. Delight in occasional live music and riveting pinnacle games every other Sunday. Become a part of the Big Sandy scene at The Mint.

While traversing Big Sandy, don't miss out on a visit to The Grocery Store, an establishment under consistent ownership for an impressive 21 years. Operating Monday through Saturday from 7 AM to 7 PM, and Sunday from 8 AM to 5 PM, they are only closed on Christmas Day. They take pride in their unwavering support for the Big Sandy Pioneers! They provide fresh meat, produce, and are as full service as they can be for their community. Stay tuned as the store is looking to expand to offer more products.



Since 1999, Hair I Am has been the go-to destination for all your hair care needs in the community. From classic cuts to vibrant colors, perms, and services for all ages, they've got you covered. Their expertise also extends to nail services. Step in for your ultimate hair and nail transformation!

Discover the heartwarming atmosphere of the Big Sandy Library, a hub for every age group in the community. Beyond granting access to literature, audiobooks, and the internet,



they offer engaging crafts, games, and puzzles. Throughout the summer, local youth can experience the magic of Camp Kindness. The new and captivating building is a must-visit gem in Big Sandy.

Embark on a fitness journey with Lift Fitness, where classes cater to all levels of fitness. Enjoy individual passes, as well as convenient punch cards for travelers and community members. Keep an eye on their Facebook page for the latest monthly class schedules.

At the Big Sandy Senior Center, relish hearty lunches and engaging activities. From bingo and trivia nights to arts and crafts and movie sessions, there's something for everyone. Engage in warm conversations with locals over a cup of coffee and learn more about the area.

You can count on the essential services of the Big Sandy Pharmacy for your medical needs. Explore an incredible selection of Montana-made products, including soaps, lotions, jewelry, and more, perfect for thoughtful gift-giving across all age groups.

Agri-Prairie Insurance takes care of the farming and ranching community with essential crop and production insurance solutions. Backed by over 70 years of combined experience, their specialization in crop insurance ensures the well-being of local operations.

CEO MESSAGE

Triangle continues to look forward to the future and as this is the first letter in 2024 from Triangle, I want to wish you all a Happy New Year and hope you enjoyed a great Christmas holiday. I want to thank my team for a wonderful year and am looking forward to another great year!

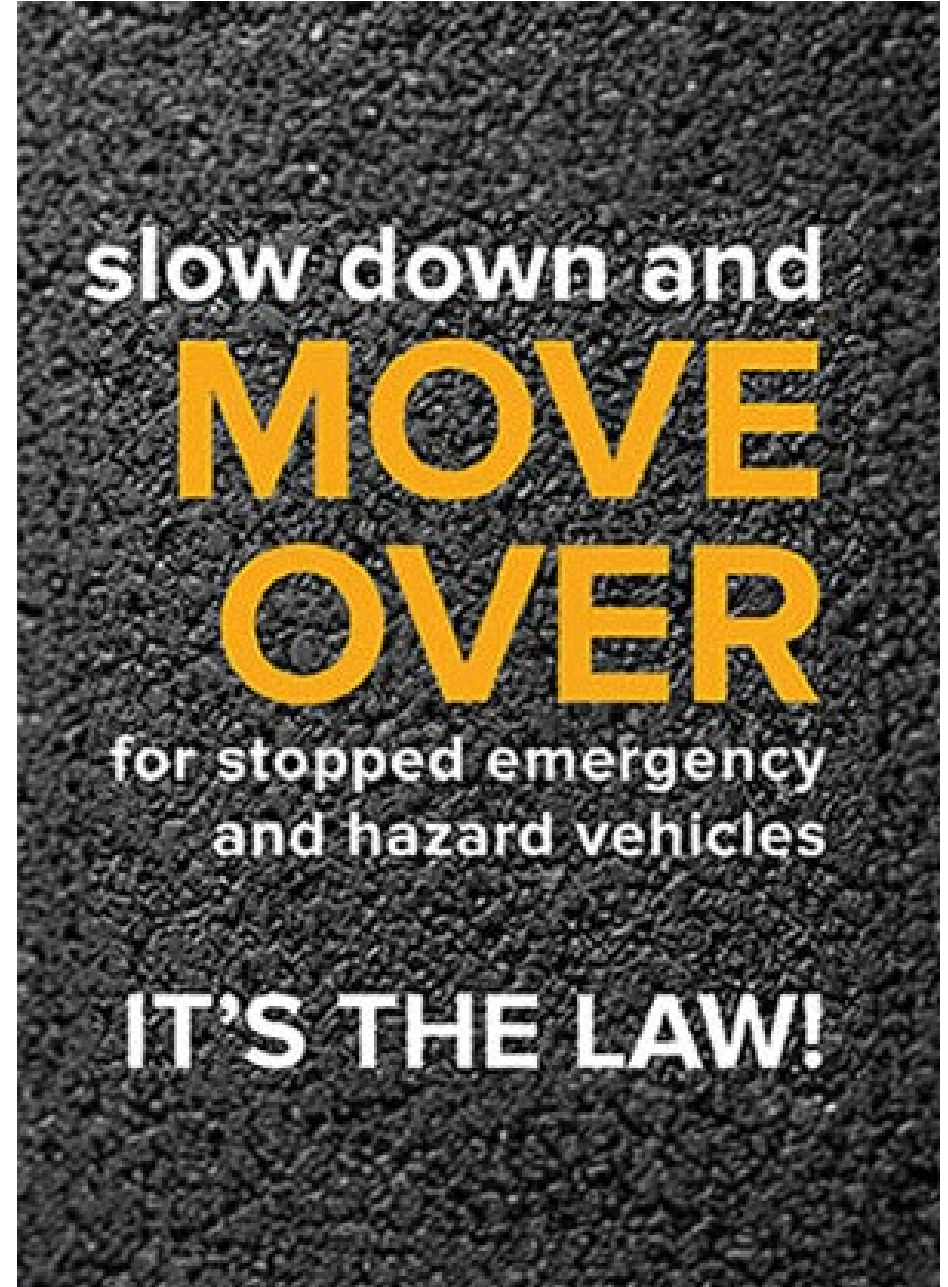
As the weather turns colder, Triangle continues to push to get fiber to all our members. Construction is complete in the Big Timber North, South Chester, and Geraldine. The amount of rock in Big Timber South continues to hold us up and we continue to work on closing the gap in the area to finish as soon as we can. Triangle continues to secure private easements in our 2024 project areas including Springdale, Martinsdale, Hays and finishing the Big Timber area. Triangle continues to work with our members and nonmember landowners; however, if we cannot secure the remaining easements in the areas held by non-members, Triangle will have to develop other routes.



Craig Gates
General Manager/CEO

Triangle accepted the Enhanced Alternative Connect America Model (EACAM) which will provide a fixed amount of funding from USF to continue to deploy a high-speed network which will deliver high-speed broadband service. The EACAM models the forward-looking economic costs of deploying a high-speed and delivering broadband service. Carriers that have elected to receive EACAM funding must meet certain service requirements which includes maintaining existing voice networks and broadband networks capable of speeds of 100 Mbps downstream/20 Mbps upstream. As we work to finish our network, Triangle is looking to increase its speeds to all members. Please look for an announcement in 2024.

Thank you all for being a member of the cooperative and for all the support you have given the cooperative over the years!! As always, stay healthy and stay safe!



2023 PHOTO CONTEST WINNERS!



1ST PLACE
Crystal Stepper



2ND PLACE
Ashley Nordboe



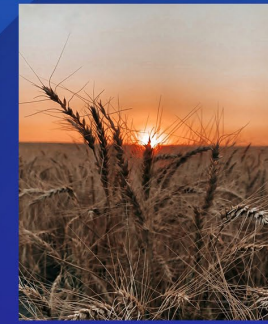
3RD PLACE
Jessica Ophus



4th PLACE
Stephanie Genereux



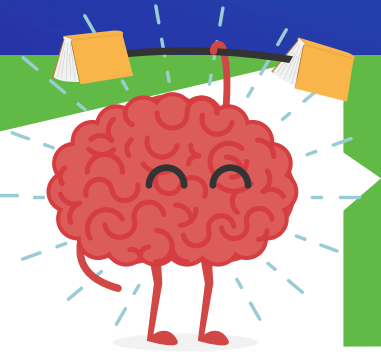
5th PLACE
Emily Scofield



6th PLACE
Ashlee Ophus

YOUTH TECHNOLOGY GRANT

YOUTH TECHNOLOGY GRANTS FROM TRIANGLE!



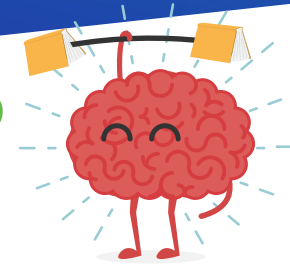
GET UP TO
\$500
FOR YOUR
YOUTH CLUB!

The Triangle Communications Youth Club/
Organization Technology Grant program offers
monetary support to youth clubs/organizations in
the Triangle service area.

- 4-H, FFA, BPA, FCCLA, Skills USA, Robotics Club, Boys & Girls Club & more are eligible.
- Funds can be used for Science, Technology, Engineering or Math related projects.
- Local chapter of club/organization must have majority of it's members within in our service area.
 - Up to \$500 Grants are available.

APPLY TODAY at
itstriangle.com/youth-tech-grant
APPLY BY FEB 15TH

THOUSANDS IN SCHOLARSHIPS AWARDED EACH YEAR!



EARN **\$2,000**
OR MORE!

Triangle \$2,000 Scholarships

Attention Senior in High School and current Undergrad or Trade School students!

Apply by April 1st!

FRS \$5,000 Scholarships

We partner with the Foundation for Rural Service providing scholarships for students attending college or vocational school. Law School Student scholarships are also available.

Apply by February 16th!

Visit itstriangle.com/scholarships for full details and application materials. *Some restrictions may apply.*

TEACHER APPRECIATION PROGRAM

Triangle Communications recognizes that recruiting and retaining good, quality educators in rural schools is a significant problem in Montana. To help address the issue, Triangle is excited to provide this opportunity for teachers. Our Teacher Appreciation Program awards educators funds that can be used for items or expenses that are the biggest priority for the awardee.

Award Amounts:



Additional \$1,000 awards may be made each year depending on applications received.

Teacher Appreciation Program Requirements:

- Teach in a B, C or smaller school district
- Teacher does not have to be a member or member-dependent
- Teach in a school district served by Triangle Communications

Include:

- Any other qualifications or interests that you think we should know about you.
- Positions of leadership
- Previous awards received
- Participation in group activities
- Community Service.
- Explain how the scholarship would encourage you to stay in your rural community for the coming years
- Letter of Recommendation

Additional Information:

Awards will be paid out in August after confirmation of teaching from B, C or smaller school administrator in our service area. Triangle Communications finalist will be submitted to Montana Telecommunications Association for the Rural Education Teacher Scholarship

Submit your application at www.itstriangle.com/education-support/teacher-appreciation-program.

Application Requirements:

- Letter of Interest
- Introduce yourself and your area of study
- Explain what influenced your decision to become a teacher
- Convey why you currently teach or want to teach in a rural community

A photograph of a smiling female teacher sitting at a desk with four young students, looking at a worksheet together. The scene is set in a classroom with wooden desks and chairs.

TEACHER APPRECIATION PROGRAM

TRIANGLE COMMUNICATIONS

Apply online at www.itstriangle.com/tap by March 1st!

SWAP AND SHOP

Welcome to our Swap and Shop! Feel free to post and find classifieds from other members!

Check out the current version online at www.itstriangle.com/swap-and-shop! Ads submitted online are usually added within **2 to 3 business days**. Due to print deadlines and space available, some ads may appear in the next magazine. *Denotes photo available on website

Triangle Communications is offering the following items for sale to the public:

Big Foot Pickup Camper

10 foot camper with overhead over pickup cab. Includes queen size bed, sleeps 4. Also has air conditioning, a refrigerator, stove and shower. Asking \$1,500, call 406.301.4035.

Antique Farmhouse cabinet with countertop*

Two pull-out cutting board surfaces, 3 drawers, 2 tilt-out bins. One door, no back, 33 1/2" tall x 62" long, 24" deep. Asking \$125. Also selling Antique Wilson oak Hoosier-style cabinet, original hardware and zinc pull-out surface, \$1,200 or best offer. Call 540.624.0502.

Farm Sink For Sale*

White porcelain over steel, double basin/double drain. Approx. 62" long, has metal cabinet sides and bottom need work, drawers and hardware in nice shape. Asking \$600 or best offer. Call 540.624.0502.

TAMKO T-Lok Shingles*

Up to 12 bundles, 22 shingles to a bundle. Tile red blend color, \$50 per bundle. Call 540.624.0502. Call 540.624.0502.

Free Moving Supplies

Flattened boxes (Lowe's small medium sizes and more), bags of bubble wrap, air bags, packing paper and foam peanuts. Hobson area, call 540.624.0502.

Hay For Sale

Alfalfa Hay, Alfalfa Grass mix, plain grass, Hay Barley in round bales. Call 406.671.6876, 406.671.6633 or 406.473.2422.

Sheetrock Lift

Heavy Duty sheetrock lift. Asking \$500, call 406.945.3764.

Men's and Women's Golf Clubs

One set of men's golf clubs, left-handed and one set of women's golf clubs, right-handed. Both only used once, asking \$50 each, call 406.945.3764.

1995 Bounder Class A Motorhome*

36ft Bounder Class A Motorhome with only 53,000 miles, diesel pusher, LP generator, all new tires, 2 filled propane tanks, 3-way refrigerator/freezer, 3 burner stove/oven, microwave, queen bed, shower/bath/toilet, 2 AC units, LP furnace, lots of storage, well kept interior. Asking \$23,000, call 406.357.3491.

Whole & Half Pork For Sale

Farm raised in Havre, processed at Saco Pay and Save. Taking pre-orders for July-September 2024 processing season. Whole pork \$450 plus processing fee, half pork \$250 plus processing fee. You receive approx. 150 pounds per whole hog. Delivering processed meat locally and between Saco and Havre on pick-up day. Contact Josh or Twyla Knudson by email at noneckfarms@gmail.com, by phone at 406.230.2281, or find Twyla on Facebook.

Flexicoil S1070 Sprayer

2009 model, 1600-gallon tank, tire size 480/80R38. \$10,500 or best offer, call 406.262.3395.

Two Flexicoil Sprayers

567 XL models, 120 ft booms, 1 in good shape and one use for parts. Asking \$10,000 or best offer. Call 406.262.3395.

Winkel Portable Cattle Chute

Has options, 30-inch swing gate like brand new, stored inside. Asking \$4250 or best offer. Call 406.262.3395.

1989 Dodge D100*

318V8, auto, short box, all original, 88k very scarce, runs great. Call 406.350.1392.

1984 Styger Panther Series IV

KM360 4-wheel drive, SF4 Hydraulics and 8500 hrs. Stored inside for 10 years, new batteries, runs well. Asking \$33,500 or best offer. Call 406.262.3395.

Ford Escape Parts Vehicle

2001 Ford Escape parts vehicle. Body and all glass in excellent condition, 4 Wheel Drive is good. Engine blown. Asking \$800, call 406.355.4123.

Cooper Tires

Four 225/60/R16 studded snow tires in good condition, asking \$150. Four LT245/75/R16 Open Country tires in good condition, asking \$175. Call 406.355.4123.

Adjustable Bed for Sale

Still in box-new, twin-size adjustable bed (knees, head raise and lower). Price new was \$855, make a reasonable offer. Call 406.262.0603.

Puppies For Sale*

LGD Anatolian/Karakachan puppies. Call 406.931.0225.

Swap & Shop is a classified advertising section of the Triangle Communications and Hill County Electric websites and newsletters. It is maintained as a service to customers and communities wanting to buy, sell and announce non-commercial items. To have an ad included, simply enter all the pertinent information on the online form. An administrator will review the information within two business days and if approved, the ad will then appear. It will stay online for 60 days unless you notify us to remove or change it. It will also appear in any of the newsletters printed during that 60 day window. Triangle reserves the right to abbreviate ads and if the section is full, we will display ads on a first come, first-served basis. If you're unable to enter your ad online you may mail or e-mail it to us using the contact info inside the front cover of this magazine. Happy swapping and shopping!

MAKING SURE YOUR PAYMENT IS APPLIED CORRECTLY

Each day Triangle receives many payments. Once the payments are opened and sorted by company, the bill statements accompanied by checks are run through a machine which reads the statement and the check. This process allows us to post payments to our members' accounts quickly.

Here are a few other tips to making sure your payment can be processed quickly:

Enclose the payment stub with your payment.

- Please **DO NOT** staple, tape or paper clip your payment to the payment stub. Staples and tape can cause problems with the machine and those payments must be processed separately.
- If there are special instructions for your payment(s), please make note on the payment stub or write a note on a piece of paper but **DO NOT** attach to the stub.
- Please use blue or black pen. Other colors can not be read by our payment processor.
- Phone and internet payments can be paid with one check, but please send the payment stubs or write all the account numbers on the memo line of your check.
- If you are paying an amount different than what is on the stub, please be sure to write the amount you want applied to the account on the stub.

MYSTERY PHOTO AND TELCO QUIZ

Two Lucky Subscribers Per Issue Will Win \$25!

We received 20 entries that correctly answered the Telco Quiz and identified the Mystery Photo as the Community Wi-Fi graphic.

Congratulations to Shawna & Jose Yates and Karen Graham who were randomly drawn to receive a \$25 credit on their next Triangle bill.

Try your luck with this issue's quiz and mystery photo shown on the right.



Two Chances to Win!

#1. When are the Triangle \$1,000 Scholarship applications Due?

#2. Mystery Photo (right):

My name is: _____

My Triangle phone number is _____

Yes! I want to receive e-mail notifications about special events or deals in my area. My e-mail address is: _____

Entries must be received by February 10, 2024 to be eligible for the drawing. Please return this slip with your payment or mail to: Newsletter, Triangle Communications, PO Box 1220, Havre MT 59501. You can also submit your answers at www.itstriangle.com/telco-quiz.





PO BOX 1140
2121 US HWY 2 NW
HAVRE, MT 59501-1140

1.800.332.1201 | Itstriangle.com

PRSR MKTG
U.S. POSTAGE
PAID
THOMAS PRINTING
59901

Serving friends and
neighbors for 70 years

Stream in
the new year!



Upgrade and get a
\$50 bill credit or
a FREE Roku!*



itstriangle.com | 1.800.332.1201



*Not available in all areas. Contact us for details.